

9,000 Predicted Registration Shatters Record

Miss 'Typical
School Girl'
Page 2

LOS ANGELES STATE College Times

Vol. X, No. 1

Los Angeles, California

Thursdays, February 2, 1956

Know A.S. Gov't
Read Parentéau
Page 2

Bus Schedule Announced Student's Patience Asked

20-Minute Shuttle Service Due Monday;
More Facilities Expected in Near Future

With two bus lines already on tap to carry students to and from the Main Campus and another awaiting franchise approval, some students may still be left behind.

This announcement came last week from State College Business Manager Warner K. Masters.

Masters pointed out that busses will run on an almost hourly basis to and from the Main Campus, but that it has been impossible to determine how many students will use the facilities.

He claimed that costs of having additional busses stand by for overflow commuters would be "prohibitive."

Patience Asked

Masters asked that all students who plan to use shuttle bus service do so from the start of school so that necessary adjustments in bus schedules may be made as soon as possible.

He asked that students "bear with" him until the situation is running smoothly.

Eastbound busses in the State College-operated shuttle service will leave from the Vermont Campus maintenance entrance and arrive approximately 20 minutes later at the foot of the main stairway at the Main Campus.

For complete details, see schedule below.

Los Angeles Transit Lines service will connect with various points in the city.

Routes Mapped

An extension of the present Indiana-Gage line (No. 32) will connect with all major L.A.T.L. lines serving the east side. From the end of the present line No. 32 the route will be known as No. 2 and will run on City Terrace Dr. to Eastern Ave., to Murphy St., to the campus.

Line No. 32 runs north from No. 47, Olympic Blvd. to Whittier Blvd., along Indiana to Brooklyn Ave., with connections at major intersections with Whittier and W. 3rd St. routes and other connections at 1st and 4th streets.

It swings east on Brooklyn to Rowan, thence north to Hammel, east to Gage and north to Pomeroy where it connects with route No. 2.

For complete L.A.T.L. schedules, call at the Student Activity Office. (The office is located in B-G on the Vermont Campus, Bldg. M on the Main Campus.)

Alhambra Proposal

The Foster Transportation Co. of Alhambra is proposing 22 cent rides to and from the Main Campus from the intersection of Garfield and Main in Alhambra. Franchise approval has not yet been received from the State Public Utilities Commission on this proposal.

Here's Shuttle Service For Between Campuses

Effective February 6, 1956
(and each week day that school is in session)

EASTBOUND from Vermont Campus
Bus will leave from Vermont Campus in front of Maintenance entrance.

Leave Vermont Campus	Arrive Main Campus
7:30 a.m.	7:50 a.m.
8:30 a.m.	8:50 a.m.
9:40 a.m.	10:00 a.m.
10:40 a.m.	11:00 a.m.
11:40 a.m.	12:00 m.
1:10 a.m.	1:30 p.m.
2:10 p.m.	2:30 p.m.
3:10 p.m.	3:30 p.m.
6:35 p.m.	6:55 p.m.
9:50 p.m.	10:10 p.m.

WESTBOUND (from Main Campus)
Bus will leave from Main Campus bus stop in the parking lot at foot of main stairs.

Leave Main Campus	Arrive Vermont Campus
8:00 a.m.	8:20 a.m.
9:10 a.m.	9:30 a.m.
10:10 a.m.	10:30 a.m.
11:10 a.m.	11:30 a.m.
12:40 p.m.	1:00 p.m.
1:40 p.m.	2:00 p.m.
2:40 p.m.	3:00 p.m.
4:35 p.m.	4:55 p.m.
6:35 p.m.	6:55 p.m.
9:50 p.m.	10:10 p.m.

Rainstorm Floods Campus; Causes Heavy Damages

(For more on floods see page 2)

The Main Campus is situated on a hill high above the Ramona Freeway. But the site was of little protective value in last week's record deluge.

State College Business Manager Warner K. Masters told the CT that the storm left serious damage to the main entry road in its wake. He cautioned students who plan to drive cars to the campus to be "extremely careful" on the road and to keep off shoulders.

Foot-Deep Mud

Other damage was recorded, including stoppage of storm drains in the parking lot which led to silt deposits on the asphalt. Masters said that the mud was a foot deep in places and covered half the lot.

He indicated that the lot would be suitable for use on Feb. 6 barring more rain damage.

He pointed out that soil erosion had taken a toll throughout the unplanted campus grounds, but called the damage "not serious," and added that landscaping will forestall recurrence of erosion damage.

Car pools were recommended by Masters in view of the damaged road and unstable parking picture.

Main Campus Opens Today

Flag-raising and ribbon-cutting ceremonies will launch State's Main Campus Monday.

President Howard McDonald and AS President Bill Pippin will officiate at the rites. They will begin at 8 a.m. and be attended by state and local dignitaries.

Pippin invited all students and faculty members to turn out for the ceremony which will officially open the Main Campus.



WAITING TIME CUT . . .

. . . students show new gimmick

Mike Slovik Gets Fraternity Award

LA State's Interfraternity Council initiated two more "firsts" to add to the school records at their Installation Banquet Jan. 21 at the Colonial Inn.

The banquet itself was one of these "firsts."

The other was the presentation of the Outstanding Fraternity Member award. Mike Slovik of Phi Delta received the honor for, as Dr. Floyd Eastwood, IFC advisor, announced at the event, "his outstanding work for the betterment of fraternity and school."

The Scholastic Achievement trophy was presented to Delta Kappa Phi for having the highest grade point average among the fraternities.

IFC keys were given to the fall semester members who were Aime Parenteau, president; Wadi Abbu and Jerome Cohen, representing Delta Kappa Phi; Denis D'Arcy, vice president; and Lee Ables, treasurer, representing Kappa Phi Sigma; Harvey Merade, secretary; Art Serote, sergeant-at-arms, Phi Delta; and Jerry Ullberg and Scot Dyer, Rho Delta Chi.

New officers are D'Arcy, president; Ullberg, vice president; Don Young, treasurer; and Joe Schiro, secretary.

McDonald Sees Need for New Campus Buildings

President Howard McDonald this week urged State College students to write their Congressmen explaining need for buildings at the Main and San Fernando campuses.

The plea came as part of an official message of welcome to new and old students. McDonald pointed out that both permanent and temporary buildings are needed.

Here is the text of his message:

Historic Period

"The spring semester of 1956 will be an historic period of time for the Los Angeles State College. Part of the college moves to a new campus. The new campus will accommodate approximately 50 per cent of the students enrolled. It is the beginning of a real home for State College students. It is true, the buildings are temporary structures, but they are the finest and best designed temporaries in the State of California.

"We are now looking forward to the construction of permanent buildings to meet the need of all students who desire to attend. The State Department of Finance is recommending that approximately \$12,000,000 be appropriated by the 1956 State Legislature for permanent buildings for the LASC Main Campus. The State Dept. of Finance is also recommending that sufficient buildings be built to house the entire State College enrollment. The aim is to transfer the



McDONALD . . .
. . . wants buildings

Phi Deltas Hold Semester Banquet

Phi Deltas Social Fraternity held its 15th semi-annual Installation Banquet Saturday, Jan. 28, at the Black Angus Steak House.

After the dinner, those attending were shown color slides of Phi Delta's activities for the past semester.

Master of Ceremonies for the evening was Hal Mintz, Phi Delta social chairman.

Trophy Awarded

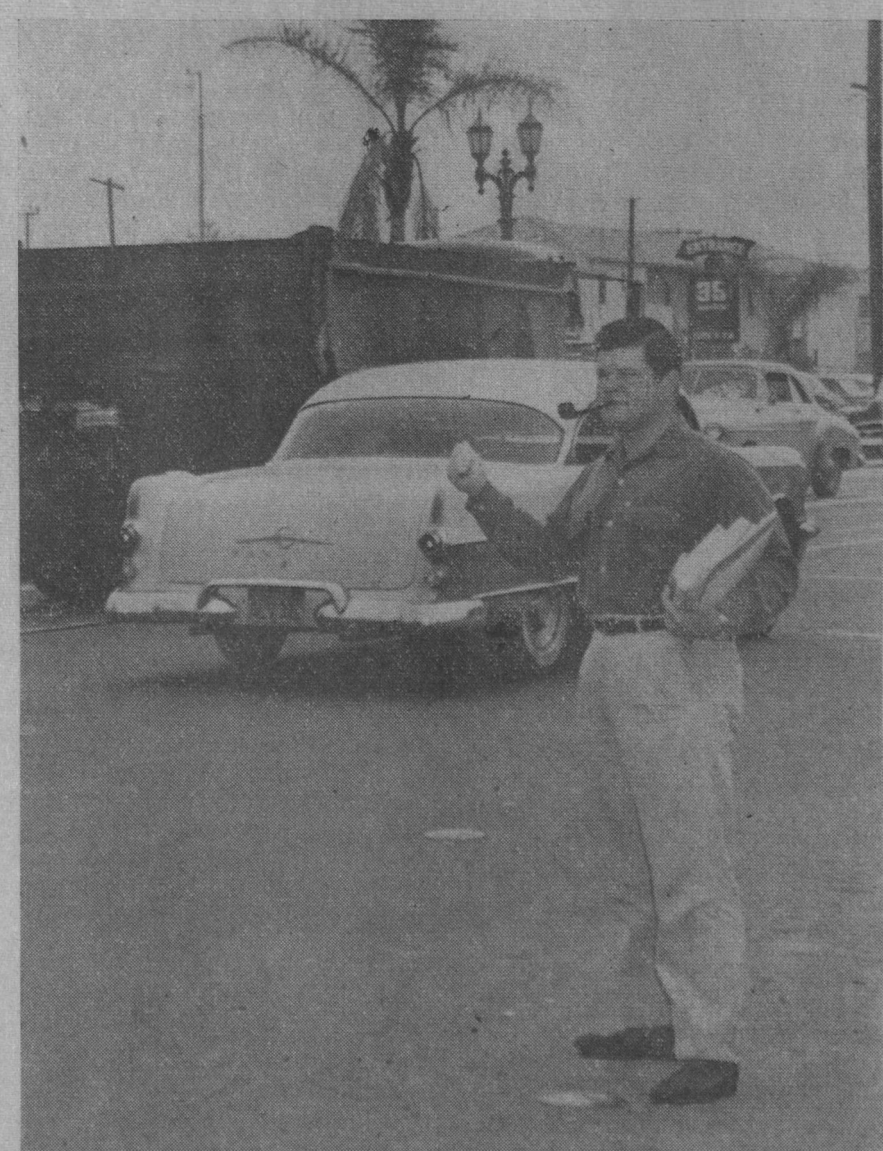
Highlight of the event was the presentation of the Phi Delta Outstanding Member's Trophy to Mike Slovik. Slovik, new president for the semester, was then given the oath of office by the fraternity's advisor, Dr. Carter Jeffers. The new president's first act of office was to present outgoing president Harvey Merade with a past president's gavel.

Slovik then introduced the cabinet of officers for the spring semester. They are Don Young, vice president and IFC representative; Vic Sabah, pledgmaster; Lou Caton, secretary; Bob Freiberg, treasurer; Paul Woolsey, alumni secretary-historian; Mintz, athletics and social chairman; Mel Wallace, scholarship chairman; and John Davidson, chaplain.

Sorority Rushing Starts

The Panhellenic Council advises that rushing for State College's three social sorority's will begin Sunday.

Women students interested in joining Alpha Theta Pi, Delta Beta Sigma or Tau Sigma Nu are asked to sign up in B-G before Friday at 4:30 p.m.



RAMONA, ANYONE? . . .

. . . no need to thumb

Enrollment Figure Tops 1955 Total by 17 Percent

A rapidly-expanding Los Angeles State College is expected to welcome over 9,000 students to its classrooms this semester.

The estimated figure is greater than that of any previous semester, according to Registrar Ray Marsh.

Marsh said that the figure, if reached, will represent an all-time enrollment high. It will be 17-20 per cent higher than the previous all-time high reached in 1955.

7,000 on Main Campus

Still to go through registration processing today are all non-matriculated students and all matriculated students who have not yet registered. (See schedule below.)

Marsh expects a total of 7,000 students to use facilities at the Main Campus, 2000 at the Vermont Campus and 800 at the San Fernando Valley Campus.

Aiding in this week's registration was a new class ticket holder devised by Marsh to eliminate waiting time. The folder made it possible for students to file all of their class tickets under proper numbers so that they would be readily available at processing stations.

... Above National Average

Marsh expressed satisfaction with facilities allotted him and foresaw no knotty problems facing his personnel. But he warned that enrollment increases at State "may be well above the national average" and expressed doubt that present building programs would be adequate to meet overall college needs even when completed.

In discussion of general registration schedules, Marsh pointed out that a late registration will be held, but made it clear that students wishing to take advantage of it must adhere to schedule.

Late Registration Schedule

The late registration will be held on the Vermont Campus for Vermont campus classes; on the Main Campus for Main campus classes. Go to the Administration Bldg., room 218, for Vermont enrollment and to the Main Campus Library for Main Campus enrollment. Dates are from Feb. 6 through Feb. 11 from 10 a.m. to 12 noon and from 5 to 7 p.m. except Friday and Saturday.

Marsh added that students delaying registration until the late period may not be able to get classes desired.

Here is today's registration schedule, good only for NON-MATRICULATED STUDENTS or MATRICULATED STUDENTS WHO HAVE NOT REGISTERED:

Day students:	
Any Letter	9 a.m. to 12 noon
Late Afternoon, Evening and Saturday Students:	
A-L	3:30 to 5:30 p.m.
M-Z	6 to 8 p.m.

Delayed AS Meet Planned Feb. 3-4

Student officials will hold their rain-delayed Leadership Seminar tomorrow and Saturday.

The ninth annual conference will be an overnight affair for the third time. It will meet at Glendale's Camp Max Strauss. Over 280 persons have been invited.

Originally scheduled for last weekend, the seminar was not held due to mud slides and other storm obstacles.

Planned Program

On tap for the two-day meeting are program discussions, lectures, workshop circles, and social activities.

Welcoming campus leaders will be Junior Class President Bobbi Goodman. Miss Goodman will serve as registrar. Members of Blue Key, Alpha Phi Omega, and Phrateres will host and hostess the affair.

New and old president (and two other officers) from each organization are invited to attend. Others invited include old and new Associated Student officers, all group advisors and Extended Day Councilmen.

Chairman Jack Moscovitz said the conference was "motivated by the many complex situations which must arise as we move to our new campus.

Rewarding Experience

"The seminar promises to be the most eventful and rewarding experience our student leaders have had the opportunity of enjoying," he continued. "We hope that everyone will come prepared for recreation as well as work."

Steering committee members at work on the conference include AS President Bill Pippin, Student Activities Director Dr. Floyd Eastwood, and Cynthia Johnson of the student activities office.

last State College student from the Vermont Campus by the fall of 1958.

Write to Legislators

"It is also interesting to know that temporary buildings will be ready for occupancy for about 500 full-time students by Sept. 1, 1956, on the San Fernando Valley Campus.

"Students are encouraged to let the state legislators in your district know how badly LASC needs not only temporary buildings but also permanent buildings.

AS President Bill Pippin Welcomes New Students

Official welcome to the combined campuses of Los Angeles State College has handed new students this week by three Associated Student officials.

The prepared statement was signed by AS President Bill Pippin, Vice President Jack Moscovitz, and Representative-at-Large Chris Abrahamian.

Life-Long Value

"We are happy that you have chosen LASC as your college. We know the educational experience you will have here will be of life-long value to you. The administration, faculty and Associated Student officers are devoted toward making your stay here both beneficial and enjoyable.

"Welcome to you, the first students to enroll in Los Angeles State College since the realization of our dream for a campus of our own. We will undoubtedly suffer growing pains but by working together we will overcome our difficulties.

Unique Government

"Of great benefit to all students are the many professional, social and service organizations on campus which will welcome your interest.

"On behalf of the Associated Students may we again welcome you and tell you how happy we are that you are here."

Pippin pointed out that student government at LASC is unique in American colleges because all administrative and fiscal control rests with students. He added that this created "untold opportunity" for professional experience for students.

IFC Holds Joint Rush

State College's Interfraternity Council will hold its semesterly Joint Fraternity Rush this Monday evening at 8 at 752 Woodman Avenue in Van Nuys.

The purpose of this rush is to acquaint the male students at State College with the social fraternity program offered here. Additional details may be obtained at the Student Activities office.

Free refreshments and informative discussion will highlight the affair. Master of Ceremonies for the event will be IFC President Denis D'Arcy. Co-hosts for the event will be Phi Delta, Rho Delta Chi, Kappa Phi Sigma, and Delta Kappa Phi social fraternities.

Activities Office Looks to Spring

BY KEN GEYER
CT Staff Writer

The Fall '55 semester has ground, to a close, and with it the functions of the State Student Activities Office located in B-G.

The divided campus has created new problems for this office. Its functions have been split between the Main Campus and the Vermont Campus.

No More 'Bungalows'

On the main campus, the Student Activities Office will be located in Building (not bungalow) M, where Dr. Floyd Eastwood and Mrs. Cynthia Johnson will continue their present activities.

Also in Building M will be the student files for the Main Campus, the office of AS President Bill Pippin and offices for Robert S. Lawrence and a representative from the graduate manager's office. Lawrence will be on the Main Campus on Mondays and Thursdays.

On the Vermont Campus, the Activities Office will be at 755 North Berendo. On the ground floor, Apt. D, Lawrence will serve as Assistant Student Activities Officer for Vermont Campus. With him will be Secretary Eileen Lepkowsky.

Bill Lenz, Graduate Manager, will have an office at 761 North Berendo, and a representative in Building M on the Main Campus.

This is YOUR Paper

The College Times is your newspaper. It is published with your money to meet your needs.

In effect, you are its publishers. So it is important that The Times be all you want it to be.

But there is more than one reason for printing this paper. First, it serves as an official vehicle of information on your campus. Second, it facilitates training of those of your fellow students who have journalistic ambition.

We feel that these reasons are of equal rank. This is a college. All of us are here to learn. And learning the newspaper business is just as important to us as are other courses of study to you.

Most of us have picked up a good deal of knowledge of the business. But not enough to qualify us as experts. We'll make a few mistakes, but we won't let them depress us. We hold to the adage which claims men learn from the mistakes they log.

We're being honest with you because we think, above all else, a newspaper owes honesty to its readers.

We can promise only one thing. We promise a newspaper in return for your investment.

That's all, but we think perhaps that's enough. Because we think you'll like the job we do for you.

Same Old Problem

It won't be long now.

Next Monday, the Los Angeles State College of Applied Arts and Sciences moves five of its eight divisions to the permanent site at Ramona.

An estimated 3100 students are expected to enroll for the day classes on the new main campus. Of this number, approximately 3100 of them are faced with the same old problem. How am I going to get there?

Same for the night school members, an estimated 2700 enrollees. No matter how you look at it, even if you have your own car, the situation looks grim.

That 900 car parking lot is looking smaller and smaller. True, the Los Angeles Transit Lines is providing a bus to the new campus, but will it be adequate? Only next Monday morning will tell.

In addition to the LATL, the shuttle bus between campuses will service those who have classes both at Ramona and Vermont.

Under good conditions, the driving time between campuses is 15 minutes, not to mention the time spent waiting for a bus. Makes it a little rough on those who have ten minutes and eight miles between classes.

AMS Welcome

I would like to take this opportunity to welcome you, the men students, back to Los Angeles State College for another semester.

However, this is not an ordinary semester beginning for us. It is the culmination of over eight years of hoping, praying, and planning by the students, faculty, administration and community. At last State College students will be attending classes on their own campus. A last, we are going home—our own home and campus with just one college on it.

"... the Rolling Hills"

This history-making step will call for the complete help and cooperation of everyone, in order that we may begin a fine heritage, a standard of traditions "among the rolling hills," that we may continue to be proud of.

Thus, we of the Associated Men Students earnestly and eagerly wish to serve your needs and interests. In order that we may properly do this, we ask three things:

(1) Obtain a copy of the new AMS handbook, "A Word About AMS," and study it for it will serve as a guide to AMS and male interests at State College.

Take Active Part

(2) Begin now to take an active part in the campus program and life—you'll be glad a month from now, but you'll be even happier ten years from now when you look back on your college days.

(3) When you have an AMS problem or a solution to one, bring it to the AMS Cabinet at their meetings in order that life at State College may be enriched and the college and its life may be strengthened.

Hoping for the most successful year yet in the history of our school, I remain

Yours sincerely,

DON YOUNG
President, AMS

Meet Miss Chris

(From Los Angeles Examiner)

American schools presented no problem for Chris Abrahamian of Iran.

Here only five years, she has become a more typical American school girl than many of her classmates.

Named the most outstanding woman at Los Angeles State College, the 23-year-old psychology major from Teheran is known about campus as "the most un-foreign foreign student."

"Integration was no problem," Miss Abrahamian explained. "I could already speak English and at the English Grammar School back home had learned American customs, ways of living, and even slang."

How well she was prepared is evident in her daily schedule. Speaking perfect English, even to accent and shadings, she has become completely involved in campus activities. Representative at large on the student council, Miss Abrahamian is a member of several social and service organizations and reigned last November as one of four homecoming princesses.

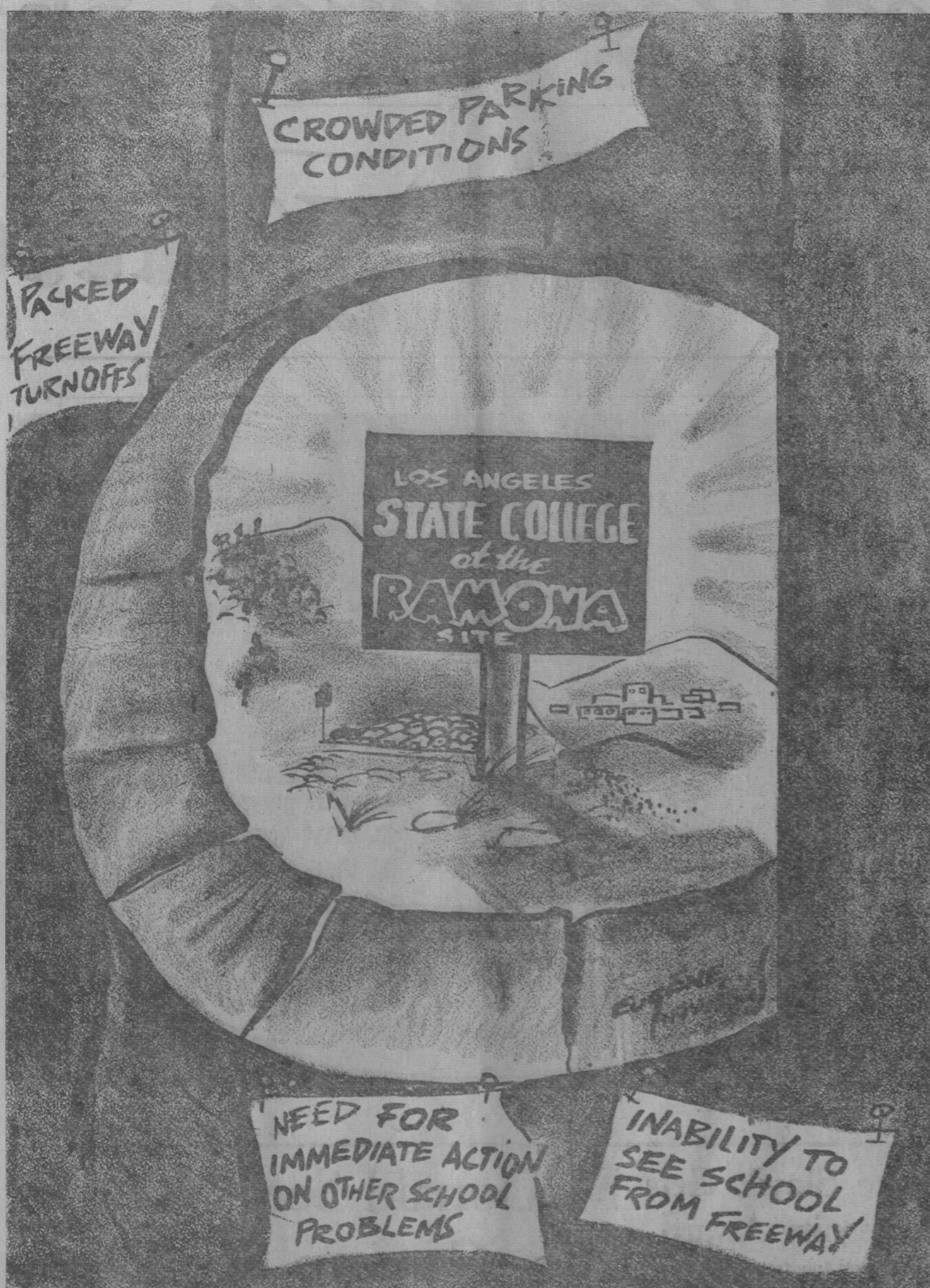
In addition, she works 15 hours a week off campus as a secretary for an insurance company. She manages a B-plus average in her studies.

The daughter of a Russian mother and Armenian father, both citizens of Iran, she found languages easy. She speaks Russian, Armenian, Iranian, French and English.

After graduation in June, Miss Abrahamian plans to spend another two years working towards her master's degree in psychology. Then she expects to return home.

IN THE EDITOR'S MAIL

THIS SPACE BELONGS TO YOU



Main Campus Directions by Eye Witness

BOB GRAF

BY MINOR WILLMAN
CT Correspondent
Vermont Avenue was never like this!

I traveled out the Hollywood Freeway the other day on my way to the new Ramona Campus of Los Angeles State College.

That is I traveled out the Hollywood Freeway until I came to the Ramona Freeway. What I mean to say is, I traveled out the Hollywood Freeway until I came to the San Bernardino Freeway.

You see, the Ramona Freeway isn't the Ramona Freeway, because that's what they named the new campus after. It's the San Bernardino Freeway now.

Believe me, if you have as much trouble as I did, you wouldn't be sure of the name of the freeway either.

Anyway, I'd been driving about 10 minutes on the San Bernardino Freeway, which used to be the Ramona Freeway, which is the reason they call it the Main Campus now.

All of a sudden, I see this sign, "Eastern Avenue Turnoff 1/4 Mile." That was refreshing, after all, State College is just off Eastern Avenue on the... well, anyway.

I turned off on the Eastern Avenue Turnoff 1/4 Mile and what do you think? I was on Sampson Avenue.

Discouraged

Don't you be discouraged, now. I wasn't. You see the Eastern Avenue Turnoff 1/4 Mile doesn't really turn off on Eastern Avenue. Now that isn't so hard to believe, after all the Ramona Freeway isn't really the Ramona Freeway, either.

You have to go up a couple of blocks and then down a couple of blocks and then you get to the Eastern Avenue Turnoff 1/4 Mile, which by now is less formally known as Eastern Avenue.

Turn left on Eastern Avenue, and then you can go over the bridge, which was really the object of the whole bloody mess. And there you see it.

You can't see the new campus yet, but the sign, the sign is there. Los Angeles State College of Applied Arts and Sciences.

There's Murphy

Before you can see the campus itself, there's Murphy.

Murphy isn't a man though, he's a Street. I mean he's a Street, like Eastern Avenue is an Avenue.

Down Murphy you go, and there it is. Los Angeles State College of Applied Arts and Sciences. Just like the sign says.

The Fish Bowl

They laugh at us back east. They laugh because they think we divide our time between shaking coconuts out of palm trees, tightrope walking earthquake cracks and swimming through six feet of water at Hollywood and Vine clad in rain gear.

Then, with paradoxical finesse, they accuse us of blowing all things out of proportion via movies and TV.

They'd redder if I recalled aloud swimming in six feet of water in a street near St. Louis (West to the Dodgers but East to us) four years ago.

Still, their jeers are not without basis. The San Andreas Fault and her jealous sisters give us a ground-buster now and then.

Highwater

And all of us remember high water. We've just seen some. Edwin Van Amringe, Pasadena geologist emeritus, tells of a 40-foot wall of water which reamed out the Arroyo Seco south of Devil's Gate during the Twenties. Forty houses were pulped by sofa-sized boulders which sat the crest of that wave.

Most of us don't remember that one. But I'll never forget watching them dig through roof-high mud which swallowed a house in 1937. They were after the body of a two-year-old.

My wife won't forget it either. She spent a day of it on the roof of her washed-out home in Anaheim and counted bodies which collected grotesquely at the rear-yard fence.

It won't happen again. The Los Angeles County Flood Control District has stuck a great big finger in the dike.

Last Thursday, I toured foothill areas which bore the brunt of previous wash-outs. No run-off water was coming from the burned-out Coast range, but plenty was coming out of the sky.

Overflow Checked
But check-basins were holding water and funneling it into proper channels. Thousands of gallons sluiced through those channels—enough to do serious damage if allowed to flow unchecked over the huge fan of dirt on which we live.

Southerly, toward beach communities where flood-control work has not neared completion, there was trouble. Homes were evacuated.

But in the foothills there was little damage. Work on channels was far enough along to be of great relief. Check-dam programs for the canyons are so nearly finished, according to Flood Control spokesman Stan Steenbock, as to be adequate even in the event of serious mountain run-off.

We feel that personnel of the Flood Control District deserve high plaudits. Thanks to them, killer floods will soon be a dim memory.

Yet, we know of at least a few complaints against the District. From detour-weary motorists, for example. And there must be others.

The District goes out of its way to pacify dissenters. And when they can get away from their telephones they dig life and property-saving ditches.

COLLEGE TIMES STAFF

Official publication of the Associated Students of Los Angeles State College, 855 North Vermont Avenue, Los Angeles 29. Edited and published by same. COLLEGE TIMES office, Bungalow 2, Normandy 3-1853.

.....	Bob Graf
.....	Aime Parenteau
.....	Frank Gregory
.....	Minor Willman
.....	Harvey Kaufman
.....	Vic Johnson
.....	Mike Calzone
.....	Tom Denton
.....	Kenneth Geyer

AIME PARENTEAU

Point of Order

You walk up to the voting booth with your activity card. You step into the booth and scan the list of names with white blocks beside them. You stamp your choice among the candidates for the various offices.

A new group of student officers step into school government.

But what happens after that? They attend meetings, make public appearances at student body functions and have their pictures regularly in the school paper.

But if you believe that's all, read on.

In this column during the semester you'll take a seat in various Council meetings—Executive, AMS, AWS, Interfraternity, Pan-Hellenic and Interclub.

Old students will discover what happens to candidates chosen during elections. New students will learn how our student government functions. Everyone will learn that State College could not run so smoothly without student government.

Two Campuses
With the division of our school into two major campuses, things will be even more difficult for student officials.

To give you an idea, we usually vote three students into year-around posts—president, vice president, and representative-at-large.

AMS and AWS
The Associated Men Students, with President Don Young, and the Associated Women Students, led by Sheila Bernstein, will function the same on the main campus and work for both campuses.

The Interfraternity Council, a supervisory group composed of representatives from the four social fraternities, will meet on the Vermont campus and function the same as AMS and AWS, insofar as division of the school is concerned. Denis D'Arcy heads this group.

The Pan-Hellenic and Interclub Councils follow the same rule. Doratheia Inselman is president of the former.

Stick around and you'll find the workings of our student government simple and the finding beneficial.

MINOR WILLMAN

All About Nothing

Well here we go again, a new semester, registration, and all the confusion that goes with it. Not to mention the move to the new campus.

Sometimes I wonder if it's worth it. Going to college and all that.

The other day I heard about a fellow who was a City College graduate. He left City and went into the insurance game. He spent two years in the business and decided to give it up and come back to school.

You know, it was the smartest thing he ever did. He finished his schooling here at State, graduated last month. And would you believe it, only two weeks later he's got a new job and doubled his income from the insurance business.

He's a milk man now, got a route all his own. See what a college education will do.

Seriously though, education is a wonderful thing. But, every day, well, maybe not every day, you read about some fellow that's made a mess of his life because he didn't like his job.

Wrong Major
Maybe some of us are studying in the wrong field. It would be kind of tough to go through four or five years majoring in Education and then find out you don't like kids.

Student Help
You might drop by some day, if you feel you could use some assistance. Especially you new students.

Well, I guess by now, if you've gotten this far, you're wondering who I am and where I got the name for the column. Maybe not but anyway...

As for me, I was around last year. You know in the Staff Box, way down at the bottom of the list where it says Staff... the last name... that's me.

About the name for the column, you've all heard the old yak about specialization in education, well this is a grand example of the end result.

I've learned more and more about less and less until now I don't take anything but Journalism classes.

Guess that "raps" it up for this time.

FRANK GREGORY

Frankly Speaking

Has anyone seen a Groundhog? Today is his coming out day, but looking back to last week at this time, I'd say he'll be a little leery when he pokes his head around. (Unless of course he has an umbrella handy.)

If Charlie Groundhog has just moved to California, and has decided to make his home anywhere around our college grounds, he's in for a big surprise today.

If he's as optimistic as I was when I first came to Los Angeles, he'll show up with sun-tan-oil and dark glasses. But after looking around, he'll probably want to trade that paraphernalia for a smog mask and a pair of ear muffs.

But Charlie will get used to our way of life, and soon he'll discover that Los Angeles isn't so bad after all. If he survives the "conditioning" period, he'll grow very fond of this metropolis, and when he starts referring to it as "L.A.," he's a goner!

Registration this year is certainly nearest to perfection. They've cut the time down to just an hour, which is pretty fast, considering all the work entailed.

I started at the beginning of the line at approximately 9:40 and ended up at the refreshment stand at 10:45. Now an hour's time isn't so bad but, it took me nearly two hours to recover from the confused condition I was left in. I've never seen so many

But next semester necessity demands five yearly officers—the three already mentioned, another vice president to preside on the Vermont campus and an assembly representative, the office paralleling representative-at-large.

Thus we have Student Body President Bill Pippine presiding over both campuses and four others to assist, two on each campus.

Representative-at-Large Chris Abrahamian will handle her office duties on the Main campus, while her official counterpart, the Assembly Representative, yet to be appointed, will stay on the Vermont site.

Thus you can visualize two groups of officers working cooperatively on two campuses.

The Interfraternity Council, a supervisory group composed of representatives from the four social fraternities, will meet on the Vermont campus and function the same as AMS and AWS, insofar as division of the school is concerned. Denis D'Arcy heads this group.

The Pan-Hellenic and Interclub Councils follow the same rule. Doratheia Inselman is president of the former.

Stick around and you'll find the workings of our student government simple and the finding beneficial.

These tests are available though, and the Test Center, under the direction of Dr. Eugenia Loder, Associate Dean of Counseling and Guidance, is more than glad to assist the student in any way possible.

As for me, I was around last year. You know in the Staff Box, way down at the bottom of the list where it says Staff... the last name... that's me.

About the name for the column, you've all heard the old yak about specialization in education, well this is a grand example of the end result.

I've learned more and more about less and less until now I don't take anything but Journalism classes.

Guess that "raps" it up for this time.

As for me, I was around last year. You know in the Staff Box, way down at the bottom of the list where it says Staff... the last name... that's me.

About the name for the column, you've all heard the old yak about specialization in education, well this is a grand example of the end result.

I've learned more and more about less and less until now I don't take anything but Journalism classes.

Guess that "raps" it up for this time.

As for me, I was around last year. You know in the Staff Box, way down at the bottom of the list where it says Staff... the last name... that's me.

About the name for the column, you've all heard the old yak about specialization in education, well this is a grand example of the end result.

I've learned more and more about less and less until now I don't take anything but Journalism classes.

Guess that "raps" it up for this time.

ANNUAL TELLS PHOTO DEADLINE

Pitchfork advises anyone who anticipates extreme travel difficulties next semester in keeping cap-and-gown portrait appointments to notify photographer Ted Osborne immediately.

No photo facilities are available at the new campus and "emergency" portraits for any graduation candidate who will be at a hardship to return to the Vermont campus for appointment should be taken immediately.

Strengthened Diablos Host S.F. State; McGilvary, Spudich Join Basketballers

Two Jayvee Aces Named Starters To Face Bay Five

BY MIKE CALZONE
Associate Sports Editor

Strengthened by the addition of two key players, State College's basketballers meet a dangerous San Francisco State quintet tomorrow night at 8 in the LACC gym.

Guard Jim Spudich and Center-Forward M. H. McGilvary, who had been ineligible the first part of the season, joined the team last week and showed signs of giving the Diablos a potent crew in the last eight games of their schedule.

The addition of Spudich and McGilvary could also boost the Devils' standing in the CCAA race, since Coach Sax Elliot's squad has four conference games remaining, two of them with powerful Santa Barbara.

Spudich Dunks 22

Spudich, a returning letterman from last year's basketball team, tallied 22 points in the two games he's appeared in this semester, and McGilvary connected for 10 digits in his only contest.

Coach Elliot will probably use McGilvary at a forward spot, where he'll team with Larry Brenner, who is apparently fully recovered from a hand injury which kept him out of the last eight contests.

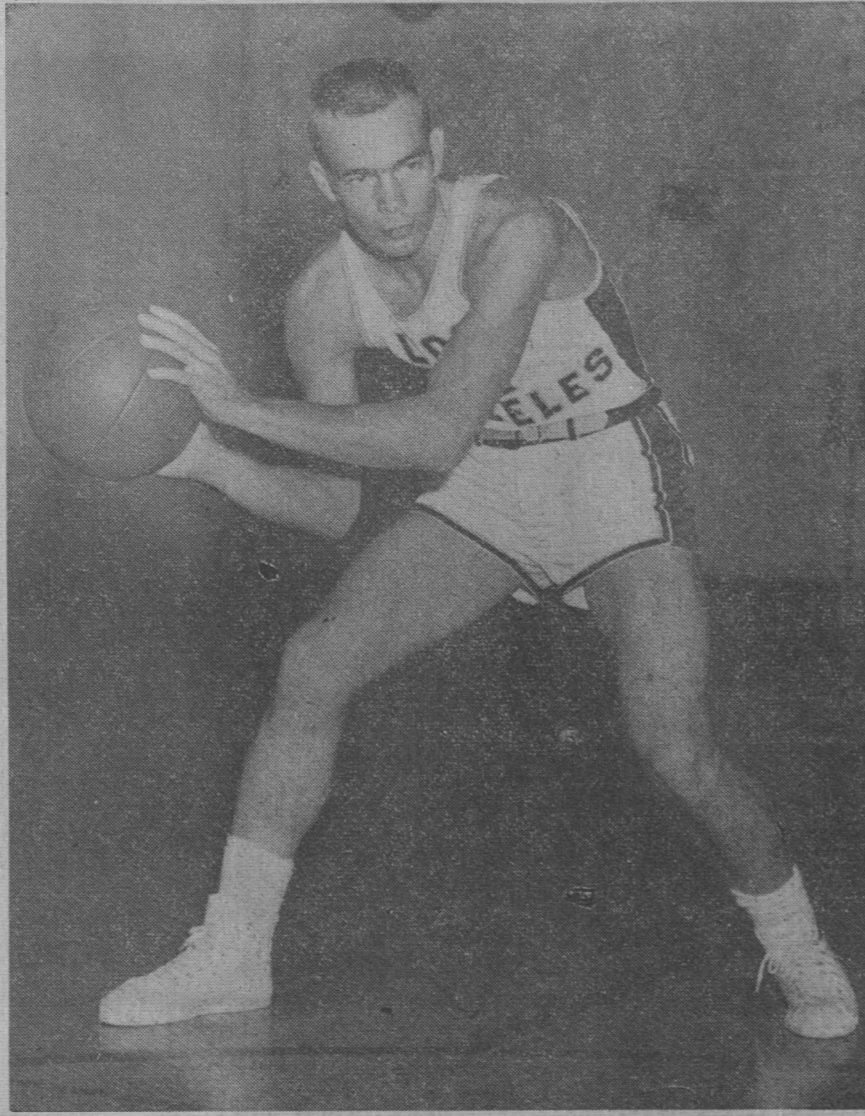
The starting center for the Diablos will be Frank Jackson, the team's second leading scorer with 307 points. Jackson has hit for 29 points on two different occasions this season, and is easily State's top rebounder with 202, a whopping 125 ahead of his nearest competitor.

Spudich and Chuck Bradish will probably get the nod from Coach Elliot at the guard positions, but flashy Fenton Gilmer will be around to lend a hand in the scoring department. Gilmer leads the Devils in scoring with 325 markers and an 18.0 average in State's 18 games.

Defending Champs

The invading San Francisco cagers are defending champs of the Far Western Conference, although the Golden Gaters rank third this year with a 2-2 mark in loop play.

Coach Dan Farmer's club boasts an



SPUDICH RETURNS—Jim Spudich, veteran guard of last year's basketball team, returns for his first home appearance against a college team tomorrow night. Spudich and "Million Harvet" McGilvary are two welcome additions to the Diablo squad.

All-Conference performer in guard Gary Kenny, a veteran of last season's hoop wars. Kenny scores with a one-hander, and is reportedly the top rebounder on the squad. He stands 6-3, and was third in team scoring last year.

Vic Gipson, a forward who has just returned from two years of service, will get a starting berth tomorrow night. Though only 6-1, Gipson usually can break through the defense and get a shot away under the closest guarding. He was selected on the All-Asia team while in the Army in Japan.

The Golden Gaters have height at

the center position in the person of Thatcher Nance, who is also a service returnee. Like State's Jackson, Nance is 6-5 and rebounds well.

Browning Speedy

Forward Ernie Browning is probably the fastest man on the San Francisco quintet, in addition to being a constant scoring threat from anywhere on the floor with his jump shot.

Another returning letterman, Phil Givant, rounds out the northerners' starting lineup. He has had mostly reserve experience, but is improving this year and will team with Kenny at guard.

Devil Hoopsters Bounce Caltech, Down Vera Cruz

State College's cagers brought their seasonal record to 9-9 with two wins in four tries during the past two weeks.

The Black and Gold hoopsters registered wins over Cal Tech 58-41 and Vera Cruz 84-56, and dropped close tilts to Westmont 65-58 and La Verne 60-57.

Fenton Gilmer's 24 points led the Devils to victory over Cal Tech's basketballers last Tuesday, while Phil Conley led the losers with 20 markers.

Diablos Pull Away

State held a 27-18 bulge at halftime, and increased the lead steadily in the second half as Coach Sax Elliot inserted his reserves into the game. M. H. McGilvary, an all-State player in high school, made his first and only appearance of the campaign thus far and helped the cause with 10 digits. He also controlled the boards as he picked off 16 rebounds.

Diablo center Frank Jackson went on a 29-point spree to aid State to its easy win over a tired Vera Cruz outfit in a game which saw Gilmer tally his 1000th point of his State College career.

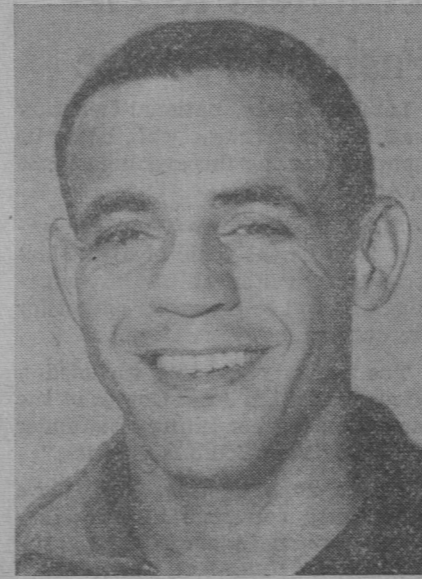
Joe Palafox of the Mexican aggregation tanked 24 points, but the locals were too hot to handle. State hit on 33 of 76 shots for 43 per cent, while Vera Cruz took 85 shots and connected on 20 for 24 per cent.

Other leading scorers were State's Gilmer with 17, and Jim Spudich with 14. Raymond Orona tallied 12 for the losers.

Terzian Tallies 30

Westmont's George Terzian split the cords for 30 points, which was largely responsible for the Warriors' triumph over the Diablos. Terzian scored 18 in the first half which boosted the winners to a 36-25 lead at intermission.

Gilmer kept State in the game with a 20-point performance, all but four



MAL WHITFIELD . . .
. . . new Diablo

coming in the second half. Center Dan Heinrichs of Westmont had 15, and Paige Johnson of the locals had 13.

State came from far behind in the final half against La Verne, but could not quite catch the Leopards and lost 60-57. The victors, in avenging an early loss to the Diablos, led 31-19 at halftime and seemed on their way to an easy win.

Devils Rally

However, Gilmer, who scored 26 points in all, sparked the Devils to a 38-point onslaught in the final half to cut the final margin to three markers. Guard Dick Carter led La Verne with 21 points.

STATE COLLEGE (58) (41) CAL TECH
P. Johnson (0) F. (0) Converse
Florentine (0) F. (6) Chilton
Jackson (8) G. (20) Conley
Bradish (0) G. (2) Van Kirk
Gilmer (24) G. (7) Bloombers

Halftime score: State College 27, Cal Tech 18.
Scoring subs: State College—Spudich 2, McGilvary 10, Brenner 5, D. Johnson 2, Cal Tech—Moody 2, Ball 4.

VERA CRUZ (56) (84) STATE COLLEGE
Herrera (5) F. (6) Bradish
Palafox (24) F. (2) P. Johnson
Orona (12) G. (23) Jackson
Nino (6) G. (17) Gilmer
Galeana (0) G. (4) Lamp

Halftime score: State College 47, Vera Cruz 28.
Scoring subs: Vera Cruz—Renteria 2, Orozco 7, State College—Beisle 2, D. Johnson 4, Wolford 4, Florentine 2, Spudich 14.

WESTMONT (65) (58) STATE COLLEGE
Terzian (30) F. (6) Bradish
Carpenter (8) F. (13) P. Johnson
Heinrichs (15) C. (8) Jackson
Smith (0) G. (20) Gilmer
Cannon (10) G. (3) Lamp

Halftime score: Westmont 36, State College 25.
Scoring subs: Westmont—Bramfield 2, State College—Beisle 2, D. Johnson 2, Florentine 4.

STATE COLLEGE (57) (60) LA VERNE
Florentine (3) F. (18) Stanford
Bradish (10) F. (0) Colbert
Jackson (8) C. (11) Deal
Lamp (6) G. (21) Carter
Gilmer (25) G. (7) Hines

Halftime score: La Verne 31, State College 19.
Scoring sub: State College—P. Johnson 4.

Mal Whitfield Enrolls at State

Mal Whitfield, two-time Olympic 800-meter champion, has enrolled at State College and will compete on the Diablo track team this semester, according to Coach Felix Jumonville.

Whitfield, who has one year of college eligibility remaining, took third place in the Boston Invitational meet's 600-yard run Saturday night. He is also expected to enter the Melrose Games in New York's Madison Square Gardens this Saturday.

The 30 year old middle distance man won the 800-meter run in the Olympic Games in 1948 and again in 1952, and clocked 1:49.2 both times.

He also captured a pair of NCAA titles in the 880-yard run while at Ohio State University in 1948 and '49. His all-time top effort in this event is 1:48.6, which stood as the world record until California's Lon Spurrier ran 1:47.5 last year.

Whitfield is a graduate of Jefferson High School and was All-City 880 champ in 1943. He then entered the Army and was still in the service while competing for Ohio State.

Winner of last year's Compton Invitational half mile, Whitfield will major in Recreation at State College this semester.

Coach Jumonville disclosed that Whitfield would probably compete in the 440, 880, and mile relay events this semester.

"Needless to say, I'm quite pleased to have him on the team," declared Jumonville.

HELP!

All men students interested in going out for spring sports should contact the respective coaches immediately in the P.E. Annex.

The coaches to see are Reed Nilssen, wrestling; Warren Reeves, golf; Emil Wroblecky, gymnastics; Cameron "Scotty" Deeds, swimming; Hank Ennen, baseball; and Felix Jumonville, track.

All prospective trackmen are asked to see Coach Jumonville Monday at the P.E. Annex or on the field so that equipment may be issued.

WE CURE SICK WATCHES

- Prompt service
- Expert repairs
- Free inspection

All Watches Guaranteed one full year

Herman Berman
"Your Campus Jeweler"

810 N. Vermont
NO 3-8884 or NO 3-1422

Men's and Women's
Gym Shoes
and
All Athletic Equipment
TENNIS RACKETS
AT
HOLIDAY SPORTING GOODS
Across from the Campus 858 N. Vermont Ave.

SAVE 25% ON USED BOOKS

We have more Used Books than ever before

Executive and Demonstrators—Hardly Ever Read—Same Low Price

• Many of Our Used Books have been traded in by a Little Old Woman from Pasadena

Complete Lines of School Supplies—Artist Supplies—Engineering Materials—Study Aids

One Stop for ALL Your School Needs

ONE STORE—ONE CHECK OUT COUNTER—SELF SERVICE WITH PERSONALIZED ATTENTION

Campus

BOOK STORE

830 north vermont avenue

The Store on the Corner—(Same Store—New Corner)

NO 3-9214

L.A. 29, CALIF.

Record Rain no Hurdle To Dancing Collegians

Embassy Room Prom
Draws 250 Couples

BY HARVEY KAUFFMAN
City Editor

"Rain. . . I'm so happy in
the rain."

Eugene Ford had no way of knowing when he composed his song about "Rain" in 1927 that almost 30 years later it would be appropriate in describing the recent Junior-Senior Prom at the Ambassador Hotel.

Nearly 250 couples—braving wind-swept torrents of rain to attend—filled the stately, mirrored Embassy Room to capacity as they danced to the music of Carrol Wax and his orchestra.

Both sponsoring class presidents exhibited early anxiety, due to the inclement weather, about attendance at the dance.

Recalling the crowded floor they both smiled happily.

"It was one of the best dances State ever had," Senior Class President Marvin Marshall said. "I'm pleased about the number of students who attended even though weather was so bad," he continued. "And it gave me particular pleasure to see so many faculty members present."

Bobbi Goodman, president of the Junior Class, said, "The crowd was tremendous and everyone seemed to be enjoying himself. That's what we were hoping for."

This was the second time in State College history that a dance of this size was given with no charge to faculty, students or guests. Originated at the Leadership Seminar a year ago, the unique idea of an "open" dance has been a success if activity participation can be used as a measuring stick.

Dean of Student Activities Floyd Eastwood—one of the originators of the "open" dance idea—said, "I feel this kind of a dance, which also honors both February and June graduates, is a good one. It gives real evidence of the returns of a student body membership."

"The dance, itself, was wonderful. I consider it the finest we ever had in terms of atmosphere, music and organization," he concluded.

A new idea for next semester's Junior-Senior Prom is already in the nucleus stage, according to Dr. Eastwood. Alumni members will also be invited to attend, giving State a mid-year opportunity to host previous graduates.

New Student Governing Plan Revealed

Student government at LA State has taken a turn for the complex.

With the inception of a dual campus set-up this semester ASB President Bill Pippin announced that new officers and new governmental bodies will by necessity have to be created.

The new plans have been laid out as follows:

(1) The present council membership will be augmented by a vice president for the Vermont campus, in addition to the Main campus veep. He will communicate the desires and suggestions of a supplementary council on that campus.

Assembly Formed

(2) This supplementary council—to be termed "Assembly" to avoid confusion—will consist of five elected members; a Men's Representative and a Women's Representative, a Representative at Large, and two student representatives. The Vermont vice president and the Rep at large will hold office for a year; the others for one semester.

(3) Under the supervision of the Vermont Rep at Large will be the six Vermont Assemblymen: Balloting (coinciding with the Election Commission on the Main campus), Publicity, Program (Activities Commissioner), Campus Relations (Public Relations), ICC Representative, Athletics and Student Representative to the Athletic Advisory Board.

Two Sides of Sports

The latter two are to represent the athletic program from both angles—the physical education department and the student body as spectators. The Advisory Board Rep will not be a PE major as the Athletic Assemblyman in order to adequately give the student view.

The Athletic Advisory Board con-

LEES MR. SHOP 800 N. VERMONT
COMPLETE LINE OF MEN'S WEAR NO 5-9616
PARK FREE (WALT'S AUTO PARK) ALL DAY WITH PURCHASE OF \$2

Teachers to Get Fashion Advice

Lambda Theta, national honorary teachers fraternity, will hold its monthly meeting this evening at 7:30 in Ad. 223.

"You the Teacher—Good Grooming" is to be the topic of Miss Marjorie Lenz, editor of Charm magazine, who will be the group's guest for the evening.

The January meeting included a discussion by Dr. John Gowan of the faculty on teacher rating tests under the title: "Your Score Is Showing."

At the same meeting, Ann Udove was elected corresponding secretary to fill the vacancy created by the resignation of Elizabeth Chao.

Dr. Feron Losee, head of the PE Division; Bill Lerz, graduate manager; Bill Pippin; Raymond Rydell, representing the faculty; the Athletic Assemblyman; the Rep to the Board and Scot Deeds, business manager for the PE Division.

(4) There will also be two Extended Day Councils, one for each campus.

(5) Of the yearly officers, the president and both vice presidents, it is planned, will be elected in the spring elections to serve through the succeeding fall and spring. The two representatives at large will be voted in during the fall balloting, to serve the succeeding spring and fall. It is felt that this overlapping of terms will insure an overall continuity in student government.

CLASSIFIED

APTS. FOR RENT near new State College campus. 1. Single furn. \$60, elec. washer, new refig. Newly decorated. 2. Unfurn. \$65, one bedroom, hard wood floors, yard, abundant cupboards, tile bath, newly decorated. 3. 5-room house, new large double garage, thermostatic control heat, 3 bedrms, hardwood floors, tile bath. Call CA 5-4333 days or AN 1-7497 evenings.

STUDENT HEADQUARTERS for study & comfort. Spec. rates, \$9 wk. up, \$60 mo. up. Complete hotel serv. Hollywood Midway Hotel, 675 N. Kenmore. NO 4-9132 or NO 5-9363.

Advertising Office is located in the Engineering Building.
Office Hours
8 and 1 Daily
9 M.W.F., 2 W.Th.F.
OFFICE NO 1-6324
Afternoons EX 4-0157
Evenings NO 1-1418 or OR 1-3546

PACKS MORE PLEASURE

because it's More Perfectly Packed!



Satisfy Yourself with a Milder, Better-Tasting smoke—
packed for more pleasure by exclusive Accu-Ray



The more perfectly packed your cigarette, the more pleasure it gives . . . and Accu-Ray packs Chesterfield far more perfectly.



To the touch . . . to the taste, an Accu-Ray Chesterfield satisfies the most . . . burns more evenly, smokes much smoother.



Firm and pleasing to the lips . . . mild yet deeply satisfying to the taste—Chesterfield alone is pleasure-packed by Accu-Ray.



© LIGGETT & MYERS TOBACCO CO.

CHESTERFIELD

MILD, YET THEY Satisfy!

ATTENTION STATE STUDENTS

Some of you may be gone (to the new Ramona Campus) but

YOU'RE NOT FORGOTTEN

We have books for All State Campuses

College Book Company

of California, Inc.

304 South Spring Street

(Just 4 blocks off Freeway Downtown)

MU 6849

854 North Vermont Ave.

(Directly across from City College)

NO 2-1197