

Homecoming Finalists Selected

By MERRY DELBRIDGE
Copy Editor

The semi-darkened Music Hall was half full of people, most of them scurrying up and down the left aisle, who had come to view the Homecoming queen finalist selection Thursday afternoon.

Behind the lights, orange flowers and "Homecoming '67" decorated a black curtain, while 2 or 3 confused technicians dragged an oversized card table on and off the stage.

Homecoming commissioner Mike Zrodlo, and Willis Edwards, in charge of the judges, buzzed around the podium and microphone, while some of the contestants sat nervously twiddling their thumbs in the audience.

The 3 biggest problems causing the delay seemed to be: (1) 3 judges had not arrived (2) where to put the judges (3) where were all the contestants?

Out of 50 applicants, only 27 showed up for the contest. Six arrived after the program began (1/2 hour late) and were disqualified.

"Here she comes!" -- the cry went up as judge Joanie Summers walked onto the stage and was quickly guided off again by an obliging gentleman. The judges were seated in the orchestra pit and treated to punch and goodies. They were all there except Mike Brown & Neile Adams -- singer Brenda Arnau, model Sandy Rocco, Mrs. Paul Burke, Miss Summers, actor Bob Wilson and Keith Jennings from the CSCLA drama department.

Somebody went to look for Mrs. McQueen (Neile Adams), and it was announced that the show would have to begin without her.

In the meantime, the contestants were given numbers and herded backstage.

Joey Hof, last year's Homecoming queen, breezed onto the stage in her crown and red minidress and gracefully related the duties and privileges of a queen.

Then a tall, pink and yellow minidressed brunette appeared behind the podium. It was Shiva Rozier, Miss USA for 1961.

After apologies for the late start, she and Zrodlo began introducing the contestants by number. The girls walked one by one onto the stage in their school clothes, made a quick turn and walked off. Just before Zrodlo revealed the majors and campus activities of the first few queen hopefuls, a petite Mrs. McQueen, attired in a striped minidress and hat, was escorted quickly down the aisle to her seat in the orchestra pit. Brown arrived later in the judging.

Nervous smiles played on the faces of the contestants as they lined up on the stage in groups of 10. The judges peered intently over the paper-flowered edge of the stage.

The girls came on again one at a time-- this time in long formals. As they passed the podium they pulled a folded question out of a bowl and Miss Rozier asked them to answer it. "Describe yourself in colors" or "what do you think is a perfect date?" brought varied answers.

Then judge Brown asked a surprise question, "Who do you think best personifies the perfect woman?" Jackie Kennedy won that contest, with "my mother" a close 2nd. The girls gave their answers as they paraded off stage.

Just as the program seemed to be at an end, the judges requested to see all the girls at once. Miss Rozier protested that some of the girls were still in their formals, some had changed back into their school clothes, and 2 had even left. So the judges sighed, tallied up their score sheets, and handed them to Edwards.

A security guard, elections commissioner Bill Merget and student activities adviser Harry Jacobs took the ballots to be counted mechanically.

Zrodlo announced that the results would be given in 1/2 hour. That was 4:20 p.m. At 6 p.m. the 15 finalists were called by numbers up onto the stage.

Linda Foltz, Joan Weidman, Carol Kochsmeier, Eileen Menotti, Jill Shimomaye, Betty Luan, Teresa Nielsen, Michael Duffy, Margaret Fierro, Shirley Pagliotti, Kathy Delehant, Louise Olivier, Cheryl Cohen, Linda Katzman and Jennie Moncton dashed up to the stage and claimed their gold ribbons.

A broken security vehicle and careful counting were the explanations for the delay.

Election of the queen and court is tomorrow and Thursday at booths in front of North Hall, the Cafeteria, and the Trident Lounge. Polls will be open 8 a.m. - 8 p.m., and students are asked to vote for 5 girls.



Which One Will Be Queen?

HOMECOMING FINALISTS -- are Joan Weidman, Eileen Menotti, Jill Shimomaye, Jennie Moncton, Shirley Pagliotti, Linda Foltz, Carol Kochsmeier, Betty Luan, Teresa Nielsen, Margaret Fierro,

Michael Duffy, Kathy Delehant, Louise Oliver, Cheryl Cohen and Linda Katzman.

(photo by Bob Weeks)

College Times

XXXIV No. 1314

Cal State at L.A.

Tuesday, October 24, 1967

Village Deadline

Diabloville Takes Shape

The deadline for submission of Homecoming village-building applications is 5:30 p.m. tomorrow in the Trident Lounge.

Mike Zrodlo, Homecoming commissioner, explained that the deadline has been extended because many alumns will be returning to see the campus this year. Since the frontier village will be up for 3 days, it will give everyone a chance to "see the creative work of these organizations." Unfortunately, only 6 campus clubs have entered the contest.

Zrodlo expressed his disappointment that only 6 (fraternities) out of 150 eligible campus organizations have signed up. "I would really like to see a village with about 10-15 structures that would show some enthusiasm, spirit and fun," he said, "comparable to the fun Long Beach students have at their 49'er day."

He outlined again the reason the Homecoming commission decided to have a village instead of floats this year. "Floats can be very expensive," he said, "we

would have no parade route, and the floats would only be up for one day. The commission has considered all this, and that is why we decided to make all organizations eligible.

"Are these 6 fraternities supposed to represent the whole campus?"

Zrodlo also stressed the flexibility of the trophies and the possibility that one group could win 2 awards.

Some of the structures appropriate for the village, he said, would be a saloon, church or mission, 'hanging' galleys, general store, newspaper office, pony express office, or courthouse.

"All you need is some wood and paint," Zrodlo pointed out. "It's very inexpensive compared to the floats."

Actual building of the western town begins at 10 p.m. Nov. 1 on the baseball field and lasts until 7 a.m. the following morning. Judging takes place at 10 a.m. Nov. 2.

Rules for the contest are: the maximum cost of the object planned must not exceed \$125; the area encompassed for construction must not exceed 20 X 20 and the height is unlimited; electrical parts must be provided for and run by generator or battery; school electrical outlets may not be used; all equipment must be safety approved; a \$5 fee must accompany the application for maintenance -- it will be refunded if the area is cleaned up by the organization involved; buildings must be removed before 8 a.m. Nov. 6.

Judging will be based on originality, directness towards theme, and art work. Four trophies will be awarded: sweepstakes for excellence of craftsmanship and appearance; grand prize for originality; queen's trophy for theme; and judges' special.

Freshmen will go to the polls Wednesday and Thursday to elect 5 class officers from 12 candidates who have filed for positions.

Heading the ballot will be the race for president. Four candidates have filed for the office which will carry with it a seat on the A.S. Board of Directors.

Karen Hodges, a psychology major from Los Angeles, served as editor of her high school newspaper. She participated in the dance club, speech club, and acted as pledge chairman of the Fine Arts Club.

Karen says she would like to see freshmen classes that are restricted to freshmen alone because mixed classes result in unfair competition for incoming freshmen.

A business-finance major from San Mateo, Greg Luning has joined EPIC, Newman club, ski club, and the Model United Nations at Cal State L.A. While in

high school, he served as president of the science club and participated in the rally committee, activities committee and junior achievement committee. He was also a member of the track team.

Luning stresses the need for communication, organization and teamwork among members of the freshman class. He has planned various events and activities for freshmen and hopes to have as many students as possible participate in them.

Gary Thomsen, a social science major, is currently a pledge of Phi Sigma Kappa at CSCLA. In high school, he served as president of the Jr. Optimists and treasurer of the German club. He was awarded the "Doc" Higgins award for the best service club president and the Harry L. Kellogg Music Award.

(Continued on Page 2)

Frosh Elections

(Continued from Page 1)
 Thomsen feels the freshman president has a dual role as president of the class and as a member of the BOD. He has kept up on CSCLA events by reading last year's freshman class minutes and attending current BOD meetings.
 Tom Contopolos, an undeclared major, is the 4th candidate for freshman president. In high school he was involved in student government and was a member of the junior varsity basketball team. He served as chairman of various commissions.
 Three candidates have filed for vice-president; Patty Ogawa, Mark Levy and David Nordin.
 Ogawa, a physical education major, is joining the convocations commission and is a member of

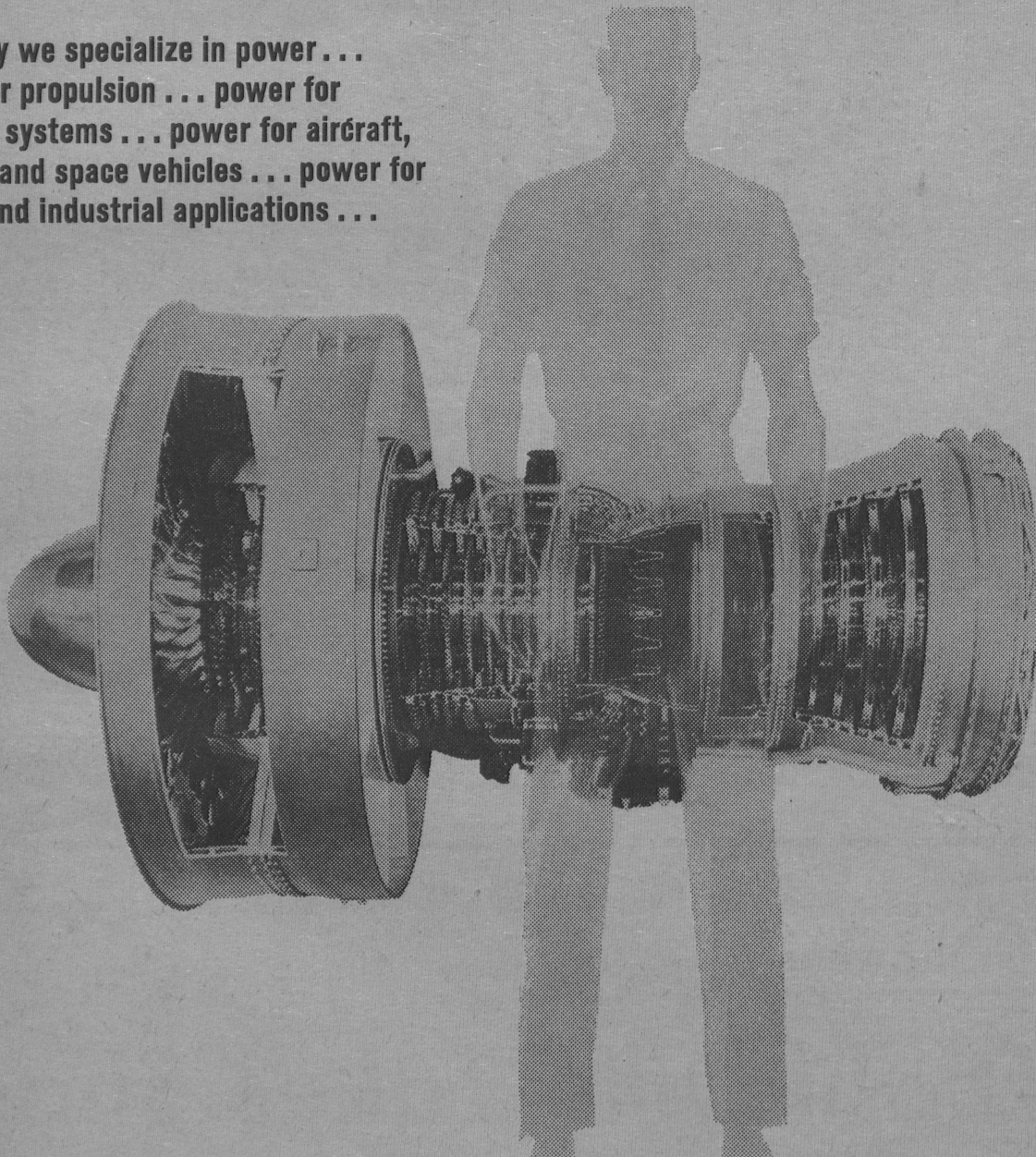
Phi Epsilon Delta. In high school she was a varsity cheerleader and president of the Southern League Council. She was also a member of the girls' lettering society and served as California Assn. of Student Council's representative from Dorsey High.
 A pre-law student from Altadena, Mark Levy was a member of the National Thespian Society, key club and student council in high school. He also served on various commissions in the student government.
 Through the blending of organization, communication and creativity, Levy hopes to develop the freshman class into a "unit of individuals working with each other and for each other without losing one's individual identity."

David Nordin, a zoology major, is a transfer from the University of Southern California. At USC he was a member of Sigma Phi Epsilon. In high school he received honorable mention in the Merit Scholarship Society and served as treasurer of the service club. He was also a member of the varsity track and football teams. He has various ideas which he feels would help the freshman class and would like to be in a position to put them into effect.
 Two candidates are in the race for freshman secretary, Tippy Lenet and Stephanie Villalobos.
 Miss Lenet, an English major, is a member of Delta Zeta and the Hillel club at CSCLA. In high school she participated in the girls'

athletic association, drama club, debate team, orchestra and swim team. She was a junior class representative and was named to the dean's honor roll.
 Miss Villalobos, participating in EPIC, the Newman Club and career committee at CSCLA, is a French and Spanish major. She served as French club vice-president in high school as well as being a member of the drill team, Spanish club, honor roll, and dean's list.
 Gloria Diaz and Mary Leimer are running for the office of treasurer.
 A biology major, Miss Diaz was a member of the drama club and future teachers in high school. She received the Paramount Womens' Club scholarship and also a

scholarship to the University of California.
 Miss Leimer, a physical education major, was an honorary board member of the genesians drama club, a member of the girls' athletic association and the Santa Monica Athletic Association.
 Running unopposed for the office of student contact, Tim Vient is an engineering major. In high school he was a senior class officer, a member of the swim team, key club, and received the service award for the senior class. He is currently a pledge of Sigma Alpha Epsilon.

Some say we specialize in power . . .
 power for propulsion . . . power for
 auxiliary systems . . . power for aircraft,
 missiles and space vehicles . . . power for
 marine and industrial applications . . .



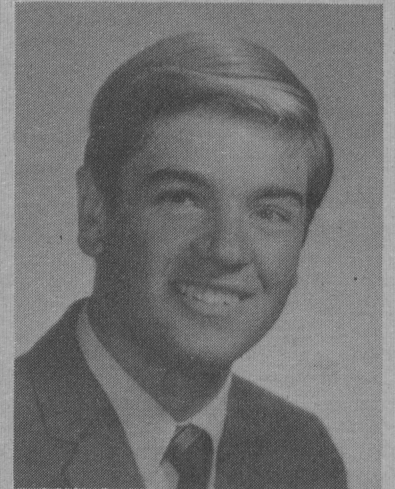
... they're right.
 And wrong.

It might be said, instead, that we specialize in *people*, for we believe that people are a most important reason for our company's success. We act on that belief.

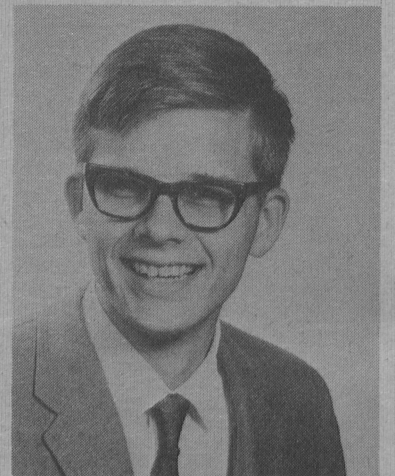
We select our engineers and scientists carefully. Motivate them well. Give them the equipment and facilities only a leader can provide. Offer them company-paid, graduate-education opportunities. Encourage them to push into fields that have not been explored before. Keep them reaching for a little bit more responsibility than they can manage. Reward them well when they do manage it.

- You could be one of the reasons for Pratt & Whitney Aircraft's success . . . if you have a B.S., M.S. or Ph.D. in:
- MECHANICAL • AERONAUTICAL • ELECTRICAL
 - CHEMICAL • CIVIL • MARINE • INDUSTRIAL
 - ENGINEERING • PHYSICS • CHEMISTRY • METALLURGY
 - CERAMICS • MATHEMATICS • STATISTICS
 - COMPUTER SCIENCE • ENGINEERING SCIENCE
 - ENGINEERING MECHANICS.

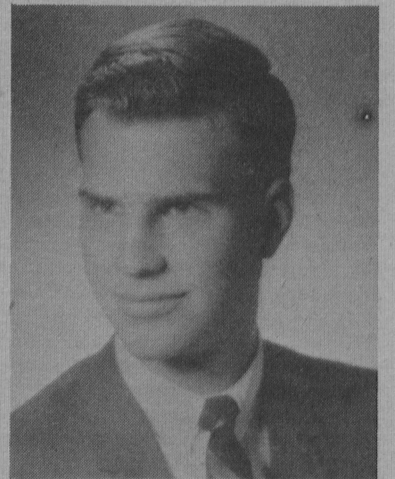
And we could be the big reason for your success. Consult your college placement officer—or write Mr. William L. Stoner, Engineering Department, Pratt & Whitney Aircraft, East Hartford, Connecticut 06108.



Tom Contopolus
 Presidential Candidate



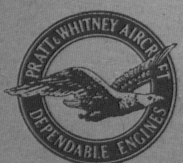
Gregory Luning
 Presidential Candidate



Gary Thomsen
 Presidential Candidate

Proficiency Exam Set for November

The proficiency exam for prospective student teachers of French Spanish will be given at 2 p.m. Monday, November 13, in NH D1055. In order for a student to be eligible to take the exam, he must have a grade point average between 2.5 and 2.9. Those with a 3.0 or better do not need to take the exam. Those interested should contact the department of foreign languages.

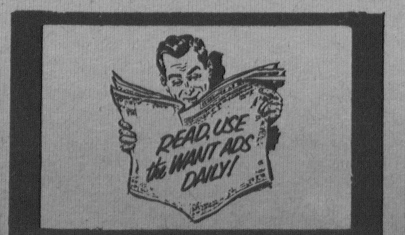


Pratt & Whitney Aircraft

CONNECTICUT OPERATIONS EAST HARTFORD, CONNECTICUT



An Equal Opportunity Employer



New Director Of Gallery Announced

Fidel Danielli has been appointed Director of the Fine Arts Gallery at Cal State Los Angeles. Danielli is a writer-critic for Art Forum magazine, and is on the art department faculty at Valley College in Van Nuys.

Initial exhibition under Danielli's direction, on view in the gallery through Nov. 2, is a collection of recent lithographs from Gemini Ltd. featuring works of contemporary American painters. Included in the show are works by Joseph Albers, Robert Rauschenberg and Frank Stella.

At the same time, the Cal State L.A. Art Department announced sponsorship of the 2nd Annual Small Images Exhibition, December 4-January 12 on campus. Competition prize money totals \$1,000. A prospectus is available by writing the Cal State Art Department at Los Angeles, California 90032. Paintings are to be 18 inches or smaller; sculpture limitations are 12 inches high. Entry deadline is November 17.



...The Face of War



Stone Country Rocks At Local Ice House

Much as it pains to pen it, the Stone Country act now appearing at the Ice House Pasadena (through Oct. 29) is an enjoyable, different performance.

The self-proclaimed description of the group's music is "contemporary, country, burlesque." The effect is something new.

Selections included Sergio Mendez' "Going Out of My Head," "Get Out of the Wheat Field Nelly 'Cause You're Working 'Gainst the Grain," "Woman Don't You Weep," and "Angelic." From the titles you get the idea: anything goes. Spokesman Richard Miller even got in some hoofing.

Miller is described by fellow Stone Danny Berry as the group's sex symbol. "He's winded," said Berry.

Ilyla-esque Don Beck plays about anything. Miller says Beck was on his paper route, "...a week late" for the Daily Zag when dis-

covered.

"Cherokee" Dennis Conway "keeps the group regular," according to Miller. Conway is the long-haired drummer.

Lead guitarist is Steve Young while Doug Brooks is "lead tambourine," again according to Miller. Young strains the low key tone of the group with his interpretation of the Presley Pelvis Percolation.

Accompanying the swingers on the card are scrambling comic Steve Martin and Walt Conley, the "last of the folk-balladsingers." -- G. Elliott

Foreign Film

The Foreign Film Festival presents "The Face of War," tomorrow at 2 p.m. in the theater. Director Tore Sjoberg has concerned himself with the futility of war before in "Mein Kampf."

In this film he covers World Wars I and II and the Korean War. He concentrates not on the leaders, but on the people who are the victims and the machines which kill them. The film uses footage that was formerly suppressed by American authorities.

Folk Dance

The International Folk Dancers will hold a Polish folk dance institute from 8 to 10 p.m. today in P.E. 134, featuring as teacher Jan Sejda, former Polish folklorist-choreographer.

Sejda now teaches at Alliance College, which is supported by the Polish National Alliance, and is director of Kujawiaki, a performing group at Alliance College. In that capacity, he teaches ethnic instruments, makes costumes, and arranges music.

The event is open to all; refreshments will be served. Donations of \$1 are being asked.

bd BENJAMIN, DO YOU BELIEVE IN LOVE AT FIRST SIGHT?

HI LO MUFFLER SERVICE
In Alhambra
Shock Absorbers - Trailer Hitches - Smog Devices Mufflers and Tailpipes
2929 W. VALLEY BLVD.
281-3654

'Cake' Termed Ambitious Task

Rehearsal has begun on "Birthday Cake," a play written by graduate drama student Godene Eagle, which will open Friday, Dec. 1, in the Arena Theater.

The director, graduate drama student Helen Goodman, calls the play one of the most ambitious student productions in the history of the drama department.

"This is the beginning of a trend to utilize the resources available to us at Cal State L.A.," Mrs. Goodman said.

According to Mrs. Goodman, this is the first time flashbacks up to 20 years in the past will be presented on a theater stage.

"Flashbacks are a movie device," Mrs. Goodman said. "Godene has done a unique job in adapting them for theater."

Mrs. Goodman wouldn't divulge the method of accomplishing the flashbacks, but she promised the end of the play in itself is worth seeing.

This is the first play that Mrs. Goodman, who has been an actress in legitimate theater, a night club singer and a vaudeville entertainer, will direct on this campus, but she has had directing experience in amateur productions.

The sets for "Birthday Cake" are being designed by David Gibson of the Occidental Summer Theater and a former drama teacher at UCLA, according to Mrs. Goodman.

CALIFORNIA STATE COLLEGE at LOS ANGELES
College Times
FOUNDED 1949. PUBLISHED BY THE ASSOCIATED STUDENTS OF CALIFORNIA STATE COLLEGE AT LOS ANGELES, INC., North Hall C3098 - 5151 State College Drive., Los Angeles. 224-3636 - 224-3637 - 221-4575

REPRESENTED FOR NATIONAL ADVERTISING BY
National Educational Advertising Services
A DIVISION OF
READER'S DIGEST SALES & SERVICES, INC.
360 Lexington Ave., New York, N.Y. 10017

Invitation

TO BROWSE IN OUR QUALITY PAPERBACK BOOK DEPARTMENT

THE TRIDENT SHOP
Your Campus Store

MANAGEMENT TRAINING

The Oldest Mutual Life Insurance Co. in America is

Now Interviewing SENIOR & GRADUATE STUDENTS

interested in a career opportunity in the field of sales management.

WE OFFER PART-TIME PAID INTERNSHIP FOLLOWED BY AN INTENSIVE 5-YEAR TRAINING PROGRAM.

Please phone our area Representative Mr. Joyce to arrange for a preliminary interview.

Mutual of New York
1033 E. Green St., Pasadena SY 6-6156

Calendar

Tuesday, October 24

EVENT	TIME	PLACE
Library Telecourse.	10 a.m.	N.H. B2005
Value Symposium-"Existentialism" "Value of Literature" film, "The Troublemakers"	Noon Noon 12:30 p.m.	Free Speech Area Heritage Room
Campus Planning	2 p.m.	Heritage Rm.
Karate lessons.	3 p.m.	P.E. 123
Chemistry Seminar	4:30 p.m.	Sci. 334
Folk Dancing - Admission \$1.	8 p.m.	P.E. 123

Wednesday, October 25

Homecoming Court Election	8 a.m. - 8 p.m.	Polling Booths
Freshmen Election	8 a.m. - 8 p.m.	Polling Booths

MEN'S HAIRSTYLING CLOSE TO CAMPUS
METRO BARBER SHOP
HAIR STRAIGHTENING RAZOR CUTTING HAIR TINTING
★ Telephone for an Appointment or Drop in Any Time ★
AN 9-1468 1743 N. EASTERN (3 blks S. West of Campus)
Air Cond. 4-Chairs Available Open 8:30 - 6:30

TOHO LA BREA THEATRE • LA BREA AT NINTH • WE 4 2342

Yagyu Secret Scrolls
in color

What is the Secret Hidden in the Scrolls? They Fight for it, Die for it... and Love for it!

Starring Toshiro Mifune
Directed by Hiroshi Inagaki

NOW PLAYING Mon. thru. Fri. 7 PM Sat. & Sun. 2 PM

co-feature *The Way-out Shrine*
in color Starring Hisaya Morishige

CLASSIFIED ADS
Call 224-3688

For Rent

2 - BDRM. APTS, FURN AND UNFURN. \$120 and up. Garden or Lanal. Air-cond., drapes, carpets, built-ins, 2 pools. Adults. 10 mins. to Cal State. HILLTOP VILLA. 262-9640. (1987-024)

UNFURN. APT. WITH w/w carpets, stove, dinette, drapes, garbage disposal. Couple or 2 students. \$80. See at 5565 Alhambra Ave. or call AX4-1148: (1961-031)

FURN. APT., SINGLE, TWO IN A ROOM-\$55 each. Combination living-bdrm., separate kitchen, disposal, drapes, carpets, washer-dryer service, full bath, built-ins. Completely furn. All utilities paid. Very low rent. Near Cal State. Walk to campus. Also 1-bdrms. 223-1851 or 291-2135. (1990-D8)

For Sale

1957 CHRYSLER IMPERIAL WITH BIG HEMMIE ENGINE, \$400. Call 224-3103. (1959-027)

FOR SALE - SITAR
Brought from India. Double tumba, ivory inlay, finely carved, with sympathetic strings, tuned, complete with case. \$350. Call 473-9413, evenings. (1966-024)

TV Rentals

RCA TV RENTALS. Special rate to Cal State students. Free delivery, free service, no deposit. 24 hr. phone HO2-1171. (1991-Yr)

Help Wanted

HELP WANTED - MEN PART-TIME / TEACH RAPID READING

Req. car, over 21, minimum 2 yr. college. Available after 2 p.m. Benefits while training, START \$4.00 plus per teaching hour. (No selling). Phone (213) OL5-4770, dept. E. (1963-026)

Bi-Lingual (Span/Eng) typist for Reading Project - \$2 per hour- until Dec. 1, 1967. Call 261-1103. Ask for Reading Project, Miss Macedo. Age: Prefer 18-26. (1945-025)

Services Offered

ROUGH DRAFT DIFFICULTIES? FORMAT TROUBLE? EDITING, REVISING, TYPING. ACADEMIC, TECHNICAL, LITERARY. RAPID DICTATION. RUSH JOBS. IBM SELECTRIC. QUALITY WORK. 931-8092. (1937-027)

EDITORIAL AND TYPING SERVICES. THESES, DISSERTATIONS, JOURNAL ARTICLES. NEW IBMS, ALL MODELS: ALL TECHNICAL, LINGUISTIC, AND OTHER SYMBOLS; STATISTICAL AND FOREIGN LANGUAGE STUDIES. HO5-1518, 24 hours, 7 days. (1944-Qr)

Share Apt:

MALE GRAD STUDENT SHARE furn. A.C. apt., own bdrm. Pool. \$72.50. 2 miles to campus. 269-9618 after 8 p.m. (1965-030)

SHARE FURN. APT. from \$42, utilities paid. Heated pool, walk to CSCLA.
College Palms Apartments. 5409 Dobbs St., L.A. 225-2696. (O24)

Real Estate

3 - BDRM. & GLASS SUN PORCH, PATIO, BBQ, full dining-rm, fire place, sprinklers. Needs work, reduced to \$19,950. Drive by 2121 LaPaloma, Alhambra, Cal. (1964-026)



GROAN, AGONY -- Instructor Emil Farkas demonstrates the side-thrust kick for the Cal State LA karate club. According to Victor Lipton, co-founder of the club, "karate is a way of life... a karatist does not fight on the streets."

Aztecs Blitz Foe

49ers Fall to No. Ariz.

Visiting Northern Arizona, the no. 8 ranked college division team, edged Cal State Long Beach Friday night, 26-21.

Quarterback Dave Merrill had passed and run Long Beach to a

Devils Score Soccer Coup

Cal State L.A.'s soccer team boosted its conference record to 3-1 Saturday with a 4-2 win over Whittier College on the CSCLA field.

Brent Peterson continued his scoring binge as he contributed 2 more goals following his 3-goal effort last week against Chapman. Danny Barnes also added a goal to the Diablos' winning effort.

After a road game Wednesday against Pomona-C Claremont, the Diablos return to host Biola in an important game Saturday at 10:30 a.m. Biola has beaten Cal Poly (Pomona), the only team to beat the Devils, and is rated as the top team in the league.

The Diablos have 4 conference games left on their schedule and are aiming for the soccer regionals in St. Louis. If they should defeat Biola, they would be front runners for the regional berth, according to team captain Roger Levy.

The soccer squad is currently waiting for action on its proposed allocation from the Associated Students. Levy stated that he "hopes" the BOD allocates the money necessary to keep their coach, Ron Crisp. The team has already received insurance funds from the BOD.

commanding 21-7 lead, but the 49ers had been panning fool's gold. NAS back Joe Warner chewed the home line with 203 yards in 33 rushes-- 6.2 yards per slam.

Warner's ploughing of the Long Beach field made the passing of Ted James work. James hit on 3 TD aerials and 11 of 16 overall for 184 yards. 2 of the payoff pitches went to Jim Fuller. Fuller was on the receiving end of the 42-yard James' throw which put the visitors ahead to stay with 6:50 remaining.

Merrill accounted for all 3 49er touchdowns on a pair of runs and a 6-yard pass.

AZTECS ROMP
Awesome San Diego State kept its juggernaut in high gear.

The Aztecs rolled over Northern Illinois on the loser's field, 47-6. At the half the score was a shaky 10-6 including a lame duck field goal that just cleared the cross bar.

Going into the game with a 4-1 mark, Illinois was unable to cope with the suddenly aroused Aztecs in the 2nd half.

The Aztecs scored 30 points in the 3rd stanza behind the power running of Ted Washington and Lloyd Edwards. The bull backfield, which terrorized Cal State LA a week earlier, accounted for 210 yards rushing. The winners had a net offense of 470 yards.

An interception return of 46 yards and a touchdown by Nate Wright turned the game into a

route.

All-American end Haven Moses caught 2 TD passes--one of which covered 51-yards. Mac Dillingham also scored twice, on 6 and 26-yard dashes.

The ferocious San Diego defense allowed the pass-minded Illinois team only 5 completions in 30 pass attempts.

BRONCOS BOW
Cal Poly (Pomona) blew a 14-10 halftime lead and the ball game to UC Santa Barbara, 31-14.

Rick Benson threw 2 TD passes to Ralph Burris and John Gabriel to give the Broncos the first half lead. A punishing ground attack wore down Poly in the third quarter. Scoring runs of one, 7, 34 and 53 yards won for the winners.

Tom Broadhead was the workhorse for the winners, carrying 26 times for 210 yards. Broadhead averaged 8.1 yards a carry and scored once on a 53-yard jaunt. In conference games Valley St. ran and passed its way to an easy 40-21 win over Cal Poly (SLO) and Fresno St. downed Cal State LA, 14-3.

The Diablos' opponent Saturday, Hawaii, was beaten 13-0, by Humboldt St.

This week, in addition to the CSCLA game, the conference games include Cal State Long Beach at Cal Poly (SLO), Chico St. at Cal Poly (Pom.) (non-conference), San Diego St. at Fresno St., and Valley St. at UC Santa Barbara.

Karatist Views

"I don't have to prove anything; I can take a slap. People who fight on streets are people who fear."

Although this is the opinion of Victor Lipton, senior psychology major at Cal State L.A., it could very well stand as any karatist's credo. This is the passive attitude taught to students of the sport.

Karate is a sport of self-defense, but it also gives a student a dangerous offensive advantage. Therefore, it is the instructors' responsibility to teach the mental and spiritual aspects of the sport.

"They come in cocky," Lipton said, "but they change. Confidence is taught, and a karatist does not fight on the streets.

"More than just being a method of self-defense, karate is a way of life," continued Lipton, co-founder of the CSCLA Karate Club. Instructors call karate a "discipline of the mind as well as the body." They say it is the focusing of the mental and physical powers -- a uniting of the body and spirit.

Santy Josal, co-founder of the Cal State Karate Club, explained that karate is not "breaking things. You don't have to condition your hands." And this is attested to by the fact that both Josal and Lipton play the piano, the latter having studied 12 years under his mother, a concert pianist.

"In karate advancement, you are only asked to break a board once and that is on the first test to get it out of your system," Josal continued.

Karate is not a violent sport; there is no contact with the ground or any other person. It is more akin to a modern dance exhibition.

Lipton also emphasized that there is no conflict between karate's close association to Zen and the student's prior religion. "There are no conflicts with Western religions," he said.

The meditations of a student before and after instruction are of non-religious nature. They are a form of "self-hypnosis". Students "transform" their arms into "rocks"; they can endure pain.

In karate exercises there is an involvement. The student's whole mind and concentration are centered on the exercises and he becomes "high."

"The exercises at the end bring you down, out of this natural force," Lipton added.

This meditation also develops the power of concentration. As Lipton put it, "You can study with

a brass band behind you."

Lipton, Josal, and a 3rd partner, David Ogata, decided to introduce karate to the Cal State L.A. campus after having gained experience of conducting similar classes in their own dojo (gymnasium), the Tokyo Karate Federation. Their students come from varied backgrounds and have sundry interests.

Serkin Leads CCAA Punting Statistics

Only one Diablo appears anywhere among the CCAA statistical leaders in any category. He is Harold Serkin who leads the conference in punting.

Serkin has booted the ball 30 times. His kicks have netted 1217 yards for an average of 40.5. The 5'10", 150 pound kicker makes up for a lack of size by powerful action and follow through. A junior, his hometown is Burbank.

The Diablo punter had 2 years of junior college grid experience before coming to CSCLA.

CAREER OPENINGS

Management Development Programs with expanding, progressive company. Careers in Production, Transportation, Refining and Accounting.

Opportunities for Majors in Accounting, Finance, Management and Engineering. Seniors invited for interview.

Campus Interview
Thursday,
October 26, 1967

union 76

Union Oil Company
An equal opportunity employer

LEE'S FAMILY BILLIARD CENTER

60¢ an Hour Per Person
LADIES-Free Instruction
Lee & Jean Stucky Owners

2606 W. MAIN ST.
(Main St. & Fremont)
ALHAMBRA
289-0903

OPEN TO THE PUBLIC

UCLA Committee on Fine Arts Productions, in cooperation with the Associated Students of UCLA, and KRLA Radio present a PAULEY PAVILION POP CONCERT

DIANA ROSS AND THE SUPREMES

PLUS Monterey Pop Festival Star • TV's "Hey, Landlord!" Star

HUGH MASEKELA • SANDY BARON

Saturday, Nov. 4 - 8:30 p.m.
PAULEY PAVILION, UCLA

Tickets: \$5.50, 4.50, 3.50, (2.50 SOLD OUT) (students \$1.50, SOLD OUT) at UCLA Concert Ticket Office (GR 8-9711, BR 2-8911, ext. 4879), and all Mutual Ticket Agencies (MA 7-1248) and Wallichs Music City Stores (466-3553). MAIL ORDERS NOW BEING ACCEPTED.
Produced by Concert Associates

NEXT: Sat., Dec. 2 - 8:30 p.m. - **JOAN BAEZ**

UNION BANK OF LOS ANGELES

AN
UNUSUAL
MANAGEMENT TRAINING PROGRAM

INTERVIEWS:
Wed., Oct. 25th

ARRANGE FOR AN INTERVIEW WITH THE PLACEMENT OFFICE